



PAPER
CODE

T3

NEET UG-2024
[PAPER WITH ANSWER KEY]

HELD ON SUNDAY 05TH MAY 2024

ZOOLOGY

SECTION-A

[Q.151] Match List I with List II:

List I	List II
A. Typhoid	I. Fungus
B. Leishmaniasis	II. Nematode
C. Ringworm	III. Protozoa
D. Filariasis	IV. Bacteria

Choose the correct answer from the options given below:

- [1] A-III, B-I, C-IV, D-II
- [2] A-II, B-IV, C-III, D-I
- [3] A-I, B-III, C-II, D-IV
- [4] A-IV, B-III, C-I, D-II

[ANS] 4

[Q.152] Match List I with List II:

List I	List II
A. Non-medicated IUD	I. Multiload 375
B. Copper releasing IUD	II. Progestogens
C. Hormone releasing IUD	III. Lippes loop
D. Implants	IV. LNG-20

Choose the correct answer from the options given below:

- [1] A-IV, B-I, C-II, D-III
- [2] A-III, B-I, C-IV, D-II
- [3] A-III, B-I, C-II, D-IV
- [4] A-I, B-III, C-IV, D-II

[ANS] 2

[Q.153] Given below are two statements:

Statements I : The presence or absence of hymen is not a reliable indicator of virginity.

Statement II : The hymen is torn during the first coitus only.

In the light of the above statements, choose the correct answer from the options given below:

- [1] Statement I is true but Statement II is false
- [2] Statement I is false but Statement II is true
- [3] Both Statement I and Statement II are true
- [4] Both Statement I and Statement II are false

[ANS] 1

[Q.154] In both sexes of cockroach, a pair of jointed filamentous structures called anal cerci are present on:

- [1] 8th and 9th segment
- [2] 11th segment
- [3] 5th segment
- [4] 10th segment

[ANS] 4

[Q.155] Match List I with List II :

	List - I		List-II
A.	Pons	I.	Provides additional space for Neurons, regulates posture and balance.
B.	Hypothalamus	II.	Controls respiration and gastric secretions.
C.	Medulla	III.	Connects different regions of the brain.
D.	Cerebellum	IV.	Neuro secretory cell

Choose the correct answer from the options given below:

- [1] A-I, B-III, C-II, D-IV
- [2] A-II, B-I, C-III, D-IV
- [3] A-II, B-III, C-I, D-IV
- [4] A-III, B-IV, C-II, D-I

[ANS] 4

[Q.156] Which of the following is not a steroid hormone?

- [1] Progesterone
- [2] Glucagon
- [3] Cortisol
- [4] Testosterone

[ANS] 2

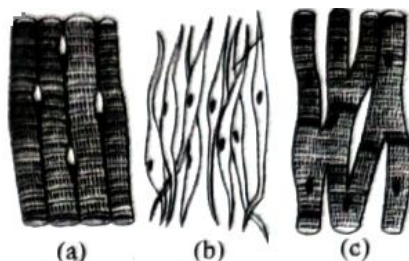
[Q.157] Which one is the correct product of DNA dependent RNA polymerase to the given template ?

3' TACATGGCAAATATCCATTCAS'

- [1] 5' TACATGGCAAATATCCAUAGGGAAGU3'
- [2] 5' ATCTACCGTTTATAGGTAAGT3'
- [3] 5' AUGUACCGUUUAUAGGUAAGU3'
- [4] 5' AUGUAAAGUUUAUAGGUAAGU3'

[ANS] 3

[Q.158] Three types of muscles are given as a, b and c Identify the correct matching pair along with their location in human body:



- [1] (a) Skeletal – Biceps
 (b) Involuntary – Intestine
 (c) Smooth – Heart.
- [2] (a) Involuntary – Nose tip
 (b) Skeletal – Bone
 (c) Cardiac – Heart
- [3] (a) Smooth – Toes
 (b) Skeletal – Legs
 (c) Cardiac – Heart.
- [4] (a) Skeletal – Triceps
 (b) Smooth – Stomach
 (c) Cardiac - Heart

[ANS] 4

[Q.159] Following are the stages of cell division:

- A. Gap 2 Phase B. Cytokinesis
 C. Synthesis phase D. Karyokinesis
 E. Gap 1 phase

Choose the correct sequence of stages from the option given below:

- [1] B – D – E – A – C [2] E – C – A – D – B
 [3] C – E – D – A – B [4] E – B – D – A – C

[ANS] 2

[Q.160] Which of the following are Autoimmune disorders?

- A. Myasthenia gravis
 B. Rheumatoid arthritis
 C. Gout
 D. Muscular dystrophy
 E. Systemic Lupus Erthematosus (SLE)

Choose the most appropriate answer from the options given below.

- [1] B, C & E only [2] C, D & E only [3] A, B & D only [4] A, B & E only

[ANS] 4

[Q.161] Match List I with List II :

List I	List II
A. Lipase	I. Peptide bond
B. Nuclease	II. Ester bond
C. Protease	III. Glycosidic bond
D. Amylase	IV. Phosphodiester bond

Choose the correct answer from the options given below :

[1] A-II, B-IV, C-II, D-III

[2] A-IV, B-I, C-III, D-II

[3] A-IV, B-II, C-III, D-I

[4] A-III, B-II C-I, D-IV

[ANS] 1

[Q.162] The flippers of the Penguins and Dolphins are the example of the

[1] Convergent evolution

[2] Divergent evolution

[3] Adaptive radiation

[4] Natural selection

[ANS] 1

[Q.163] Match List I with List II :

List I	List II
A. Expiratory Capacity	I. Expiratory reserve volume + Tidal Volume + Inspiratory reserve Volume
B. Functional Residual Capacity	II. Tidal volume + Expiratory reserve volume
C. vital capacity	III. Tidal volume + Inspiratory reserve volume
D. Inspiratory Capacity	IV. Expiratory reserve volume + Residual Volume

Choose the correct answer from the options given below :

[1] A-II, B-I, C-IV, D-III

[2] A-I, B-III, C-II, D-IV

[3] A-II, B-IV, C-I, D-III

[4] A-III, B-II, C-IV, D-I

[ANS] 3

[Q.164] Which one of the following factors will not affect the Hardy-Weinberg equilibrium?

- [1] Gene migration [2] Constant gene pool
[3] Genetic recombination [4] Genetic drift

[ANS] 2

[Q.165] Given below are some stages of human evolution Arrange them in correct sequence. (Past to Recent)

- A. *Homo habilis* B. *Homo sapiens*
C. *Homo neanderthalensis* D. *Homo erectus*

Choose the correct sequence of human evolution from the options given below :

- [1] C-B-D-A [2] A-D-C-B [3] D-A-C-B [4] B-A-D-C

[ANS] 2

[Q.166] Following are the stages of pathway for conduction of an action potential through the heart :

- A. AV bundle B. Purkinje fibres
C. AV node D. Bundle branches
E. SA node

Choose the correct sequence of pathway from the options given below :

- [1] B-D-E-C-A [2] E-A-D-B-C
[3] E-C-A-D-B [4] A-E-C-B-D

[ANS] 3

[Q.167] Which of the following factors are favourable for the formation of oxyhaemoglobin in alveoli ?

- [1] Low $p\text{CO}_2$ and High H^+ concentration
[2] Low $p\text{CO}_2$ and High temperature
[3] High $p\text{O}_2$ and High $p\text{CO}_2$
[4] High $p\text{CO}_2$ and Lesser H^+ concentration

[ANS] 4

[Q.168] Match List-I with List-II :

- | List-I | List-II |
|-------------------------------|--------------------|
| A. α -1 antitrypsin | I. Cotton bollworm |
| B. Cry IAb | II. ADA deficiency |
| C. Cry IAc | III. Emphysema |
| D. Enzyme replacement therapy | IV. Corn borer |

Choose the correct answer from the options given below :-

- [1] A-III, B-IV, C-I, D-II [2] A-II, B-IV, C-I, D-III
[3] A-II, B-I, C-IV, D-III [4] A-III, B-I, C-II, D-IV

[ANS] 1

[Q.169] Given below are two statements : one is labelled as Assertion A and the other is labelled as Reason R :

Assertion A : FSH acts upon ovarian follicles in female and Leydig cells in male.

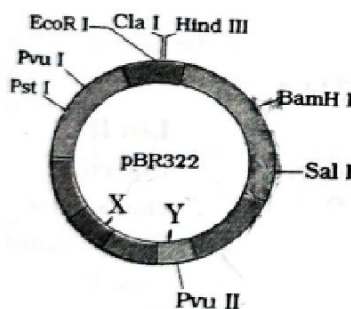
Reason R : Growing ovarian follicles secrete estrogen in female while interstitial cells secrete androgen in male human being.

In the light of the above statements, choose the correct answer from the options given below :

- [1] A is true but R is false
- [2] A is false but R is true
- [3] Both A and R are true and R is the correct explanation of A.
- [4] Both A and R are true but R is NOT the correct explanation of A.

[ANS] 2

[Q.170] The following diagram showing restriction sites in E.coli cloning vector pBR322. Find the role of 'X' and 'Y' genes :



- [1] The gene 'X' is for protein involved in replication of Plasmid and 'Y' for resistance to antibiotics.
- [2] Gene 'X' is responsible for recognition sites and 'Y' is responsible for antibiotic resistance.
- [3] The gene 'X' is responsible for resistance to antibiotics and 'Y' for protein involved in the replication of Plasmid.
- [4] The gene 'X' is responsible for controlling the copy number of the linked DNA and 'Y' for protein involved in the replication of Plasmid.

[ANS] 4

[Q.171] Match List I with List II :

- | | |
|--------------|----------------------------------|
| A. Cocaine | I. Effective sedative in surgery |
| B. Heroin | II. Cannabis sativa |
| C. Morphine | III. Erythroxyllum |
| D. Marijuana | IV. Papaver somniferum |

Choose the correct answer from the options given below:

- [1] A-II, B-I, C-III, D-IV
- [2] A-III, B-IV, C-I, D-II
- [3] A-IV, B-II, C-I, D-II
- [4] A-I, B-III, C-II, D-IV

[ANS] 2

[Q.172] Consider the following statements :

- A. Annelids are true coelomates
- B. Poriferans are pseudocoelomates
- C. Aschelminthes are acoelomates
- D. Platyhelminthes are pseudocoelomates

Choose the correct answer from the options given below :

- [1] C only [2] D only [3] B only [4] A only

[ANS] 4

[Q.173] Given below are two statements :

Statement I : In the nephron, the descending limb of loop of Henle is impermeable to water and permeable to electrolytes.

Statement II : The proximal convoluted tubule is lined by simple columnar brush border epithelium and increases the surface area for reabsorption.

In the light of the above statements, choose the correct answer from the options given below :

- [1] Statement I is true but Statement II is false
- [2] Statement I is false but Statement II is true
- [3] Both Statement I and Statement II are true
- [4] Both Statement I and Statement II are false

[ANS] 4

[Q.174] Match List I with List II :

List I

- A. Fibrous joints
- B. Cartilaginous joints
- C. Hinge joints
- D. Ball and socket joints

List II

- I. Adjacent vertebrae, limited movement
- II. Humerus and Pectoral girdle, rotational movement
- III. Skull, don't allow any movement
- IV. Knee, help is locomotion

Choose the correct answer from the option given below :

- [1] A-II, B-III, C-I, D-IV [2] A-III, B-I, C-IV, D-II
- [3] A-IV, B-II, C-III, D-I [4] A-I, B-III, C-II, D-IV

[ANS] 2

[Q.175] Which of the following is not a natural/traditional contraceptive method?

- [1] Lactational amenorrhea [2] Vaults
- [3] Coitus interruptus [4] Periodic abstinence

[ANS] 2

[Q.176] Match List I with List II:

List I

- (A) Pleurobrachna
- (B) Radula
- (C) Stomochord
- (D) Air bladder

List II

- I. Mullusca
- II. Ctenophora
- III. Osteichthyes
- IV. Hemichordata

Choose the correct answer from the options given below:

[1] A-II, B-IV, C-I, D-II

[2] A-IV, B-III, C-II, D-I

[3] A-IV, B-II, C-III, D-I

[4] A-II, B-I, C-IV, D-III

[ANS] 4

[Q.177] Match List I with List II:

List I

- (A) Axoneme
- (B) Cartwheel
- (C) Crista
- (D) Satellite

List II

- I. Centriole
- II. Cilia and flagella pattern
- III. Chromosome
- IV. Mitochondria

Choose the correct answer from the options given

[1] A-II, B-IV, C-I, D-III

[2] A-II, B-I, C-IV, D-III

[3] A-IV, B-III, C-II, D-I

[4] A-IV, B-II, C-III, D-I

[ANS] 2

[Q.178] Which of the following statements is incorrect?

[1] Bio-reactors are used to produce small scale bacterial cultures.

[2] Bio-reactors have an agitator system, an oxygen delivery system and foam control system

[3] A bio-reactor provides optimal growth conditions for achieving the desired product

[4] Most commonly used bio-reactors are of stirring type

[ANS] 1

[Q.179] Match List I with List II

List I**(Sub Phases of Prophase I)**

- (A) Diakinesis
- (B) Pachytene

- (C) Zygotene
- (D) Leptotene

List II**(Specific characters)**

- I. Synaptonemal complex formation
- II. Completion of terminalization of chiasmata
- III. Chromosomes look like thin threads
- IV. Appearance of recombination nodules

Choose the correct answer from the options given below:

[1] A-II, B-IV, C-I, D-III

[2] A-IV, B-III, C-II, D-I

[3] A-IV, B-II, C-III, D-I

[4] A-I, B-II, C-IV, D-III

[ANS] 1

[Q.180] Match List I with List II:

List I

- (A) Common cold
(B) Haemozoin
(C) Widal test
(D) Allergy

List II

- I. Plasmodium
II. Typhoid
III. Rhinoviruses
IV. Dust mites

Choose the correct answer from the options given below:

- [1] A-III, B-I, C-II, D-IV
[3] A-II, B-IV, C-III, D-I

- [2] A-IV, B-II, C-III, D-I
[4] A-I, B-III, C-II, D-IV

[ANS] 1

[Q.181] Given below are two statements : one is labelled as Assertion A and the other is labelled as Reason R:

Assertion A : Breast-feeding during initial period of infant growth is recommended by doctors for bringing a healthy baby.

Reason R : Colostrum contains contains several antibodies absolutely essential to develop resistance for the new born baby:

In the light of the above statements, choose the most appropriate answer from the options given below:

- [1] A is correct but R is not correct.
[2] A is not correct but R is correct.
[3] Both A and R are correct and R is the correct explanation of A.
[4] Both A and R are correct but R is NOT the correct explanation of A.

[ANS] 3

[Q.182] Match List – I with List – II :

	List – I		List – II
A.	Pterophyllum	I.	Hag fish
B.	Myxine	II.	Saw fish
C.	Pristis	III.	Angel fish
D.	Exocoetus	IV.	Flying fish

Choose the correct answer from the options given below:

- [1] A-IV, B-I, C-II, D-III
[2] A-III, B-II, C-I, D-IV
[3] A-II, B-I, C-III, D-IV
[4] A-III, B-I, C-II, D-IV

[ANS] 4

[Q.183] The "Ti plasmid" of *Agrobacterium tumefaciens* stands for

- [1] Tumor inducing plasmid
- [2] Temperature independent plasmid
- [3] Tumor inhibiting plasmid
- [4] Tumor independent plasmid

[ANS] 1

[Q.184] Which of the following is not a component of Fallopian tube?

- [1] Infundibulum
- [2] Ampulla
- [3] Uterine fundus
- [4] Isthmus

[ANS] 3

[Q.185] Match List – I with List – II :

	List – I		List – II
A.	Down's syndrome	I.	11 th chromosome
B.	α -Thalassemia	II.	'X' chromosome
C.	β -Thalassemia	III.	21 st chromosome
D.	Klinefelter's syndrome	IV.	16 th chromosome

Choose the correct answer from the options given below:

- [1] A-III, B-IV, C-I, D-II
- [2] A-IV, B-I, C-II, D-III
- [3] A-I, B-II, C-III, D-IV
- [4] A-II, B-III, C-IV, D-I

[ANS] 1

SECTION-B

[Q.186] The following are the statements about non-chordates:

- A. Pharynx is perforated by gill slits.
- B. Notochord is absent.
- C. Central nervous system is dorsal.
- D. Heart is dorsal is present.
- E. Post anal tail is about

Choose the most appropriate answer from the options given below:

- [1] B, D & E only
- [2] B, C & D only
- [3] A & C only
- [4] A, B & D only

[ANS] 1

[Q.187] Match List I with List II :

List I	List II
A. Mesozoic Era	I. Lower invertebrates
B. Proterozoic Era	II. Fish & Amphibia
C. Cenozoic Era	III. Birds & Reptiles
D. Paleozoic Era	IV. Mammals

Choose the correct answer from the options given below:

[1] A-I, B-II, C-IV, D-III

[2] A-III, B-I, C-IV, D-II

[3] A-II, B-I, C-III, D-IV

[4] A-III, B-I, C-II, D-IV

[ANS] 2

[Q.188] Given below are two statements:

Statements I : The cerebral hemispheres are connected by nerve tract known as corpus callosum.

Statements II : The brain stem consists of the medulla oblongata, pons and cerebrum.

In the light of the above statements, choose the most appropriate answer from the options given below:

[1] Statement I is correct but Statement II is incorrect.

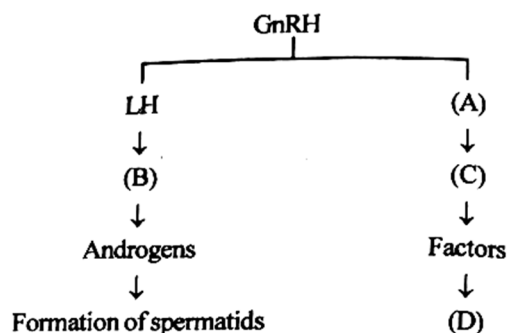
[2] Statement I is incorrect but Statement II is correct.

[3] Both Statement I and Statement II are correct

[4] Both Statement I and Statement II are incorrect

[ANS] 1

[Q.189] Identify the correct option (A), (B), (C), (D) with respect to spermatogenesis.



[1] FSH, Sertoli cells, Leydig cells, spermatogenesis.

[2] ICSH, Leydig cells, Sertoli cells, spermatogenesis.

[3] FSH, Leydig cells, Sertoli cells, spermiogenesis.

[4] ICSH, Interstitial cells, Leydig cells, spermatogenesis.

[ANS] 3

[Q.190] Match List I with List II :

List I	List II
A. RNA polymerase III	I. snRNPs
B. Termination of transcription	II. Promotor
C. Splicing of Exons	III. Rho factor
D. Tata box	IV. SnRNAs, tRNA

Choose the correct answer from the options given:

- | | |
|----------------------------|----------------------------|
| [1] A-III, B-IV, C-I, D-II | [2] A-IV, B-III, C-I, D-II |
| [3] A-II, B-IV, C-I, D-III | [4] A-III, B-II, C-IV, D-I |

[ANS] 2

[Q.191] Match List I with List II:

List I	List II
A. Exophthalmic goiter	I. Excess secretion of cortisol, moon face and hyperglycemia
B. Acromegaly	II. Hypo-secretion of thyroid hormone and stunted growth.
C. Cushing's syndrome	III. Hyper secretion of thyroid hormone and protruding eye balls.
D. Cretinism	IV. Excessive secretion of growth hormone.

Choose the correct answer from the options given below:

- | | |
|----------------------------|----------------------------|
| [1] A-III, B-IV, C-II, D-I | [2] A-III, B-IV, C-I, D-II |
| [3] A-I, B-III, C-II, D-IV | [4] A-IV, B-II, C-I, D-III |

[ANS] 2

[Q.192] Match list I with List II

List I	List II
A. Unicellular glandular epithelium	I. Salivary glands
B. Compound epithelium	II. Pancreas
C. Multicellular glandular epithelium	III. Goblet cells of alimentary canal
D. Endocrine glandular	IV. Moist surface of buccal cavity

Choose the correct answer from the options given below:

- | | |
|-----------------------------|----------------------------|
| [1] A-III, B-IV, C-I, D-II | [2] A-II, B-I, C-IV, D-III |
| [3] A-II, B-II, C-III, D-IV | [4] A-IV, B-III, C-I, D-II |

[ANS] 1

[Q.193] Given below are two statements:

Statement I: Bone marrow is the main lymphoid organ where all blood cells including lymphocytes are produced.

Statement II Both bone marrow and thymus provide micro environments for the development and maturation of T-lymphocytes.

In the light of the above statements, choose the most appropriate answer from the options given below:

- [1] Statement I is correct but Statement II is incorrect.
- [2] Statement I is incorrect but Statement II is correct.
- [3] Both Statement I and Statement II are correct.
- [4] Both Statement I and Statement II are incorrect.

[ANS] 3

[Q.194] Match List I with List II related to digestive system of cockroach.

List I

List II

- | | |
|--|--------------------------------|
| <p>A. The structures used
For storing of food</p> | <p>I. Gizzard</p> |
| <p>B. Ring of 6-8 blind tubules at junction of
Foregut and midgut</p> | <p>II. Gastric Caeca</p> |
| <p>C. Ring of 100-150 yellow coloured thin
filaments at unction of midgut and hindgut</p> | <p>III. Malpighian tubules</p> |
| <p>D. The structures used for grinding the food</p> | <p>Iv. Crop</p> |

Choose the correct answer from the options given below:

- [1] A-IV, B-III, C-II, D-I
- [2] A-III, B-II, C-IV, D-I
- [3] A-IV, B-II, C-III, D-I
- [4] A-I, B-II, C-III, D-IV

[ANS] 3

[Q.195] Choose the correct statement given below regarding juxta medullary nephron.

- [1] Loop of Henle of juxta medullary nephron runs deep into medulla.
- [2] Juxta medullary nephrons outnumber the cortical nephrons.
- [3] Juxta medullary nephrons are located in the columns of Bertini.
- [4] Renal corpuscle of juxta medullary nephron lies in the outer portion of the renal medulla.

[ANS] 1

[Q.196] Match List I with List II:

List I	List II
A. P wave	I. Heart muscles are electrically silent.
B. QRS complex	II. Depolarisation of ventricles.
C. T wave	III. Depolarisation of atria.
D. T-P gap	IV. Repolarisation of ventricles.

Choose the correct answer from the options given below :

[1] A-II, B-III, C-I, D-IV

[2] A-IV, B-II, C-I, D-III

[3] A-I, B-III, C-IV, D-II

[4] A-III, B-II, C-IV, D-I

[ANS] 4

[Q.197] As per ABO blood grouping system, the blood group of father is B⁺, mother is A⁺ and child is O⁺. Their respective genotype can be

A. I^Bi / I^Ai / ii

B. I^BI^B / I^AI^A / ii

C. I^AI^B / iiI^A / I^Bi

D. I^Ai / I^Bi / I^Ai

E. iiI^B / iiI^A / I^AI^B

Choose the most appropriate answer from the options given below :

[1] C & B only

[2] D & E only

[3] A only

[4] B only

[ANS] 3

[Q.198] Given below are two statements :

Statement I: Gause's competitive exclusion principle states that two closely related species competing for different resources cannot exist indefinitely.

Statement II: According to Gause's principle, during competition, the inferior will be eliminated. This may be true if resources are limiting.

In the light of the above statements, choose the correct answer from the options given below:

[1] Statement I is true but Statement II is false.

[2] Statement I is false but Statement II is true.

[3] Both Statement I and Statement II are true.

[4] Both Statement I and Statement II are false.

[ANS] 3

[Q.199] Regarding catalytic cycle of an enzyme action select the correct sequential steps :

- A. Substrate enzyme complex formation.
- B. Free enzyme ready to bind with another substrate.
- C. Release of products.
- D. Chemical bonds of the substrate broken.
- E. Substrate binding to active site.

Choose the correct answer from the options given below:

- | | |
|-------------------|-------------------|
| [1] B, A, C, D, E | [2] E, D, C, B, A |
| [3] E, A, D, C, B | [4] A, E, B, D, C |

[ANS] 3

[Q.200] Given below are two statements :

Statement I : Mitochondria and chloroplasts are both double membrane bound organelles.

Statement II : Inner membrane of mitochondria is relatively less permeable, as compared to chloroplast.

In the light of the above statements, choose the most appropriate answer from the options given below

- [1] Statement I is correct but Statement II is incorrect.
- [2] Statement I is incorrect but Statement II is correct.
- [3] Both Statement I and Statement II are correct.
- [4] Both Statement I and Statement II are incorrect.

[ANS] 1